

HDD Monitor User Guide

Table of Contents

Introduction.....	2
Installation Instruction.....	2
How to Use HDD Monitor	5
HDD Monitor Interface.....	6
Functional Buttons.....	7
Drive List	7
Information Tabs.....	8
Information Tab ~ Disk information	8
Information Tab ~ SMART information	8
Information Tab ~ Diagram	9
Program Settings.....	10
Preferences ~ General.....	10
Preferences ~ Alarm.....	11

HDD Monitor User Guide

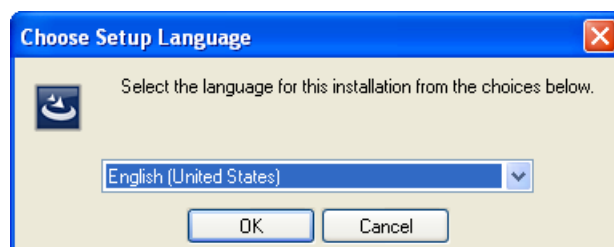
Introduction

HDD Monitor is designed for monitoring status of disk storage devices. Use SMART attribute values & other disk related data to check disk status. It will post alarm to notify user if there is an error.

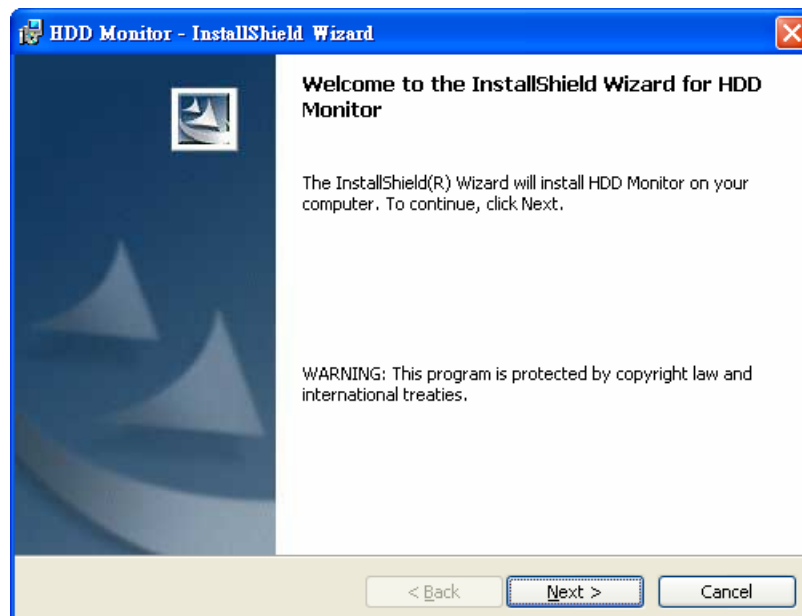
Installation Instruction

Please follow the instructions below to install HDD Monitor program:

1. Run Setup.exe to pop-up **Choose Setup Language** dialog. Select install language version (only English & Traditional Chinese version available) and press **OK** to begin installation.



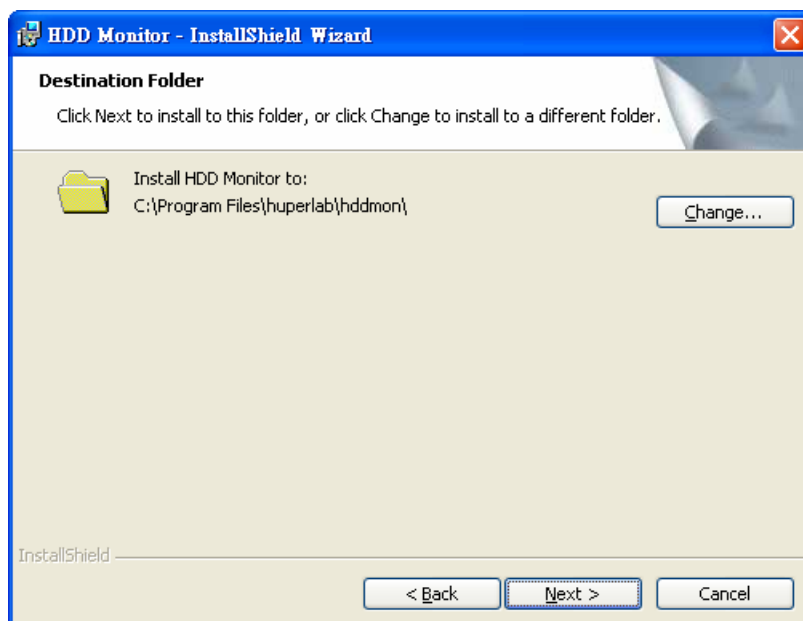
2. Start installation, press **Next** to continue.



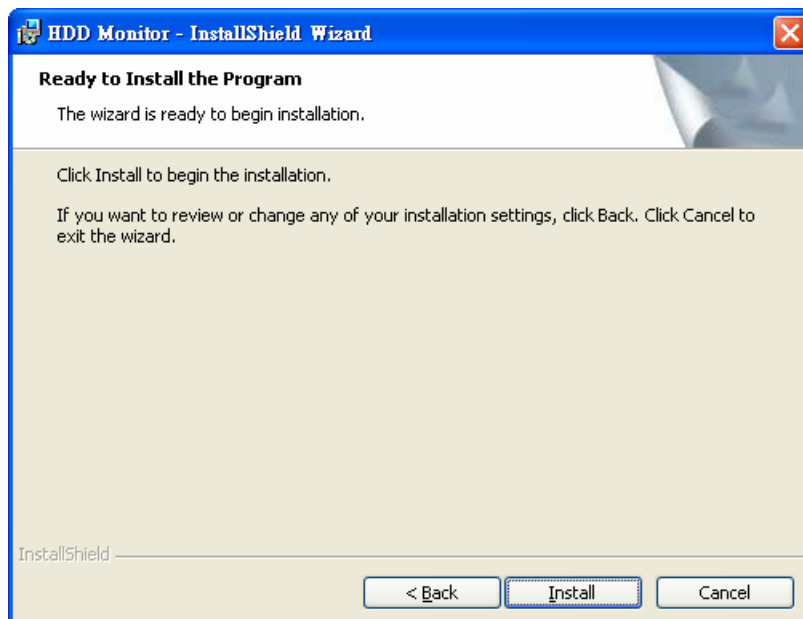
- Please choose **I accept the terms in the license agreement** and then press **Next** to continue.



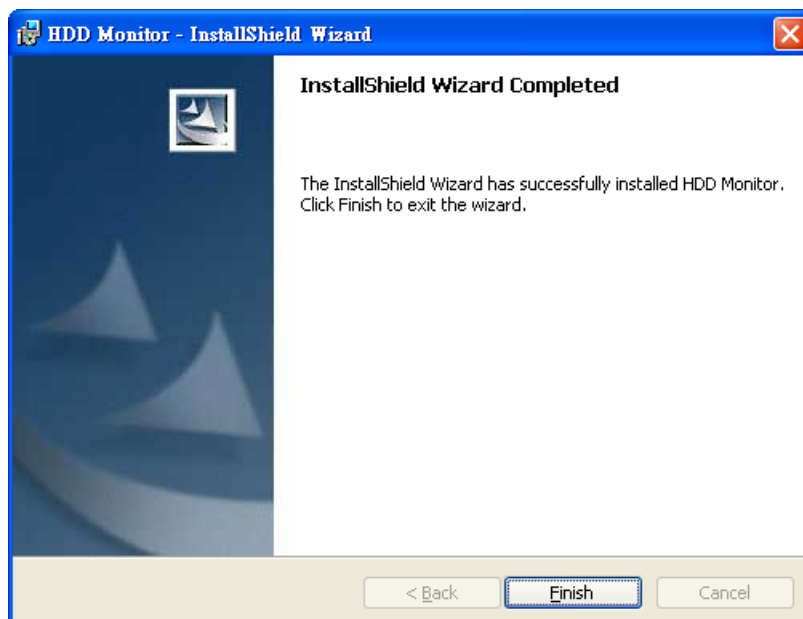
- Choose destination folder. The default path for installation is C:\Program Files\huperlab\hddmon\. Press **Change...** if you want to install to another folder. Press **Next** to continue if the destination folder is confirmed.



5. Press **Install** to start installing program. Press **Back** if you want to change installation options.




6. Press **Finish** to end installation.



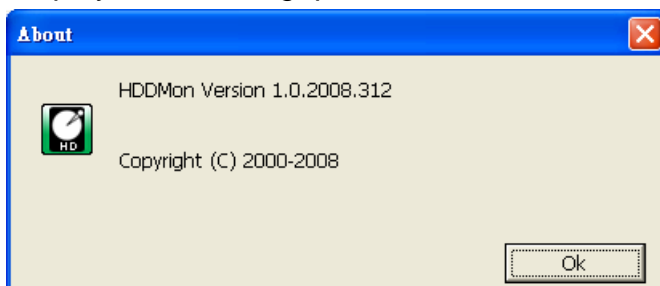
How to Use HDD Monitor

After installation is finished, select **Start→Programs→huper Utilities→**

HDD Monitor to start program. It will display  icon on the screen. Press right mouse button on this icon will pop-up command menu as below:

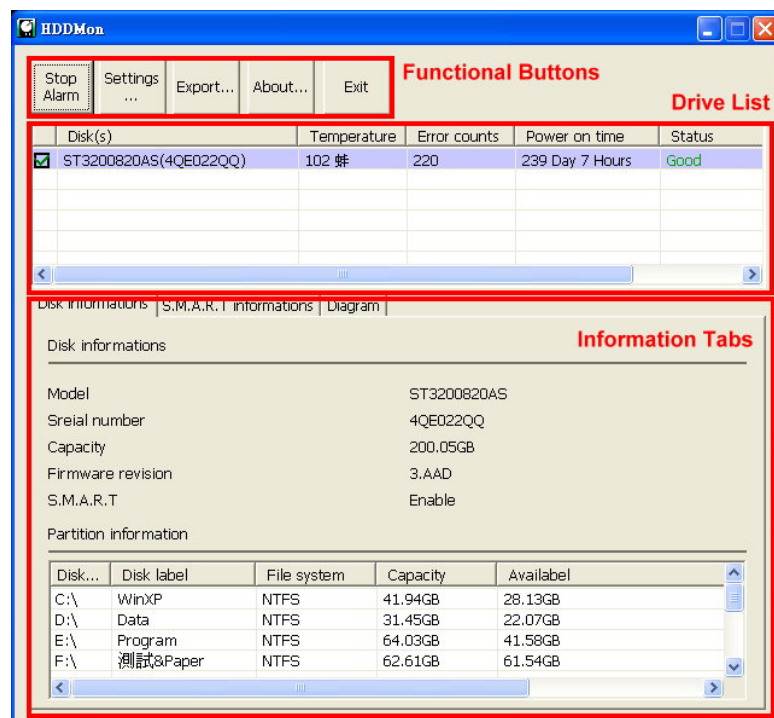


Command	Description
Open	Open HDD Monitor main window
Close	Close HDD Monitor program
Stop Alarm	Stop alarm from program manually, enable when there is an alarm.
About...	Display About dialog, press OK to close.



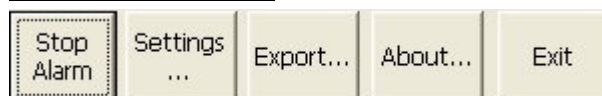
HDD Monitor Interface

Select **Open** command in the pop-up menu will open HDD Monitor main window. There are 3 major parts in the main window and is described as below:









Name	Description
Functional Buttons	Program related functional buttons
Drive List	List of available drive to be detected
Information Tabs	Drive related information, 3 tabs here: Disk information, SMART information, Diagram

Functional Buttons



Description of functional buttons is listed below:

Feature	Description
	Stop alarm manually, enabled when there is an alarm.
	Pop up Preferences dialog
	Export selected drive information to text file
	Pop up HDD Monitor about dialog
	Close HDD Monitor main window and back to floating icon  mode.

Drive List

	Disk(s)	Temperature	Error counts	Power on time	Status
<input checked="" type="checkbox"/>	ST3200820AS(4QE022QQ)	102 度	220	239 Day 7 Hours	Good

Drive list displays all available (detectable) drives (not disk partition). It can only display internal drive (external drive is not supported now). Column description of this list is listed below:

Column	Description
Check Box	HDD Monitor will check drive status by schedule according to settings if check this option.
Disk(s)	Display drive model number & serial number
Temperature	Drive temperature of last checking period
Error counts	Accumulated error counts during disk checking
Power on time	Drive power on time
Status	<p>Drive status of last checking period, three type status conditions are displayed:</p> <p>Good: normal status</p> <p>Warning: critical status near abnormal (displayed when any drive reference parameter exceeds 70%)</p> <p>Bad: abnormal status</p>

Information Tabs

There are 3 drive related information tabs: Disk information, SMART information, Diagram

Information Tab ~ Disk information

Disk informations | S.M.A.R.T informations | Diagram

Disk informations

Model

ST3200820AS

Sreial number

4QE022QQ

Capacity

200.05GB

Firmware revision

3.AAD

S.M.A.R.T

Enable

Partition information

Disk...	Disk label	File system	Capacity	Availabel
C:\	WinXP	NTFS	41.94GB	28.13GB
D:\	Data	NTFS	31.45GB	22.07GB
E:\	Program	NTFS	64.03GB	41.58GB
F:\	測試&Paper	NTFS	62.61GB	61.54GB

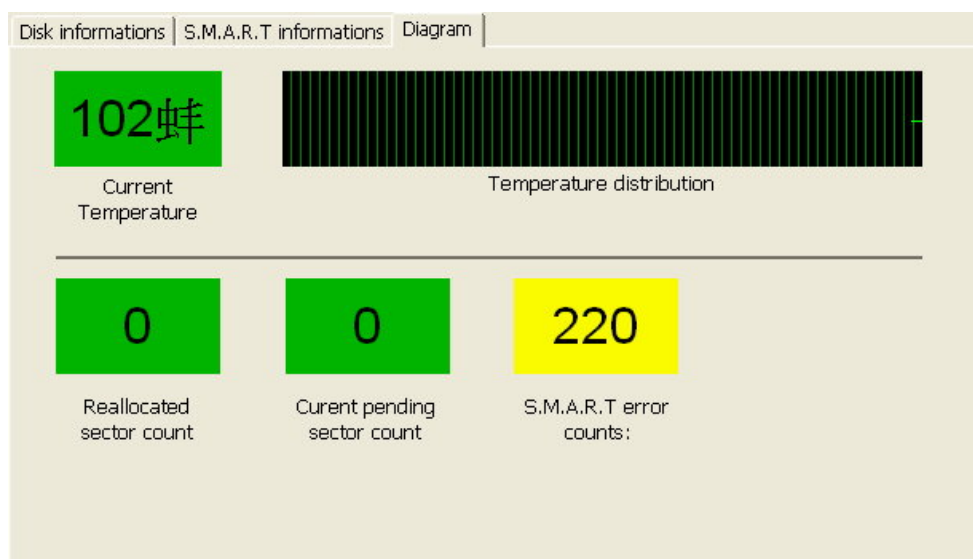
This tab displays basic drive information including model, serial number, capacity, firmware reversion, SMART feature and partition information.

Information Tab ~ SMART information

Disk informations S.M.A.R.T informations Diagram					
Attribute name	Attribut...	Attribut...	Worst ...	Raw value	Status
01 Raw read error rate	119	6	90	00000C105DB7	Good
03 Spinup time	96	0	95	000000000000	Good
04 Start/Stop count	100	20	100	0000000000B3	Information a.
05 Reallocated sector count	100	36	100	000000000000	Good
07 Seek error rate	88	30	60	0000292ACEA	Good
09 Power-on hours count	94	0	94	00000000166F	Information a.
0A Spinup retry count	100	97	100	000000000000	Good
0C Power cycle count	100	20	100	0000000000BA	Information a.
BB vendor-specific	100	0	100	000000000000	Information a.
BD vendor-specific	100	0	100	000000000000	Information a.
BE vendor-specific	61	45	42	000027170027	Information a.
C2 HDA Temperature	39	0	58	001000000027	Information a.
C3 Hardware ECC recovered	114	0	61	00000C1AB6FB	Information a.
C5 Current pending sector c...	100	0	100	000000000000	Information a.
C6 Offline scan uncorrectabl...	100	0	100	000000000000	Information a.
C7 UDMA CRC error count	200	0	200	000000000000	Information a.
C8 Write error rate or Multi ...	100	0	253	000000000000	Information a.
CA Data Address Mark errors	100	0	253	000000000000	Information a.

This tab displays SMART related information. Colored text in the Status column are drive status reference parameters. It will display nothing in this tab if the drive doesn't support SMART feature.

Information Tab ~ Diagram

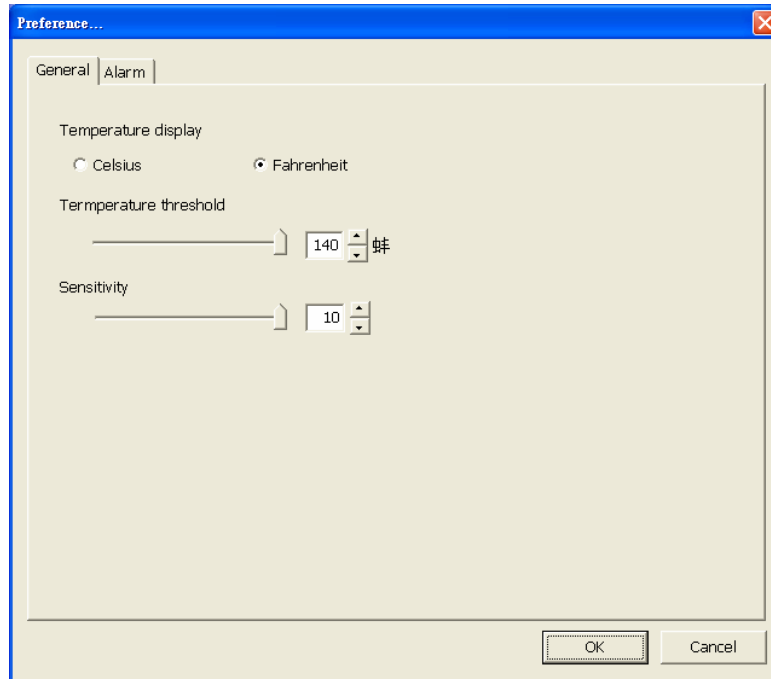


Display temperature distribution diagram & several important reference parameters for reference.

Program Settings

Press Settings button in the HDD Monitor main window will pop up Preferences dialog. Two setting pages in this dialog: General, Alarm. Features are described as below:

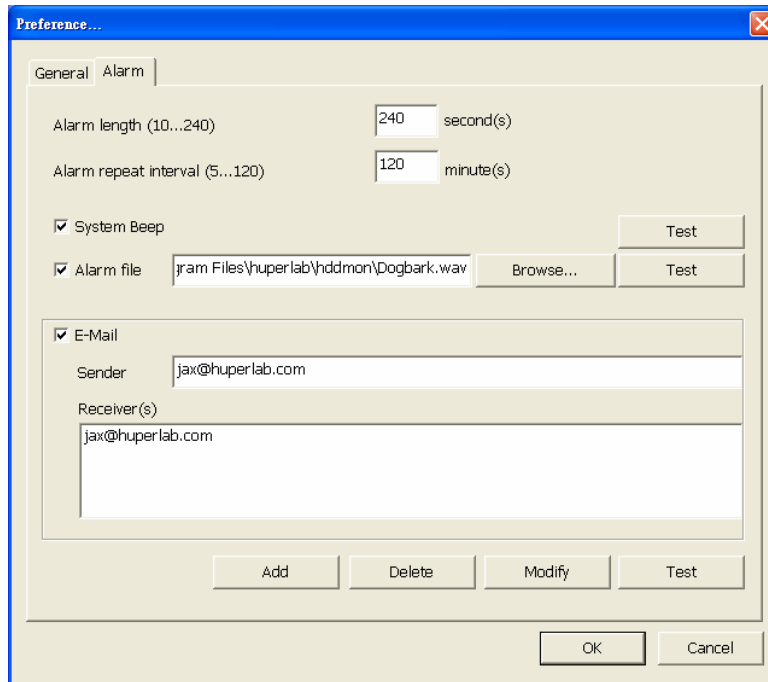
Preferences ~ General



The settings in Preferences General page are listed below:

Setting	Description
Temperature display	Change temperature display mode, Celsius or Fahrenheit can be selected.
Temperature threshold	Select temperature threshold for alarm, ranged from 31°C~60°C or 88°F~140°F. It will transfer temperature value automatically when changing Temperature display setting.
Sensitivity	Adjust alarm sensitivity. Higher value gets higher sensitivity. The program will adjust internal parameters with sensitivity value.

Preferences ~ Alarm



Preference...

General Alarm

Alarm length (10...240) 240 second(s)

Alarm repeat interval (5...120) 120 minute(s)

☒ System Beep Test

☒ Alarm file C:\Program Files\huperlab\hddmon\Dogbark.wav Browse... Test

☒ E-Mail

Sender jax@huperlab.com

Receiver(s) jax@huperlab.com

Add Delete Modify Test

OK Cancel

The settings in Preferences Alarm page are listed below:

Setting	Description
Alarm length	Set alarm warning period. This option is used for system beep & sound alarm.
Alarm repeat interval	Set post alarm warning interval. All warning options (system beep, sound alarm, E-Mail) will be posted repeatedly with this time interval if the alarm is not stopped manually.
System Beep	Use system beep as alarm sound. Check option to enable this feature. Press Test button can play beep sound from system.
Alarm file	Use sound file as alarm sound. Check option to enable this feature. Press Browse... button can browse and select file. Press Test button can play sound file for testing.
E-Mail	Send E-Mail when there is an alarm. Check option to enable this feature. Use buttons below (Add, Delete, Modify, Test) to edit E-Mail list and sending test mail.